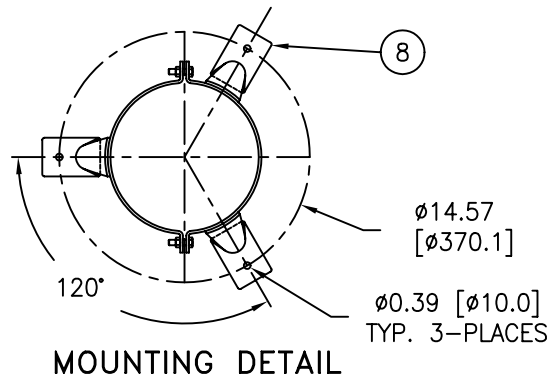
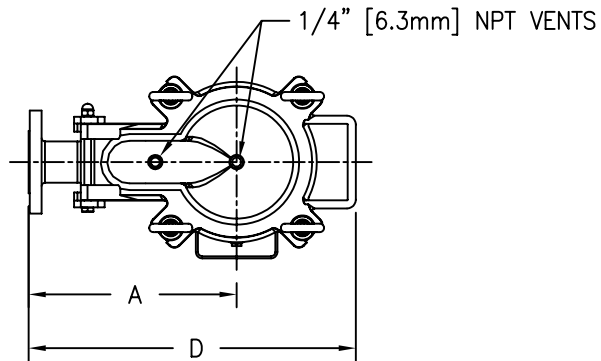
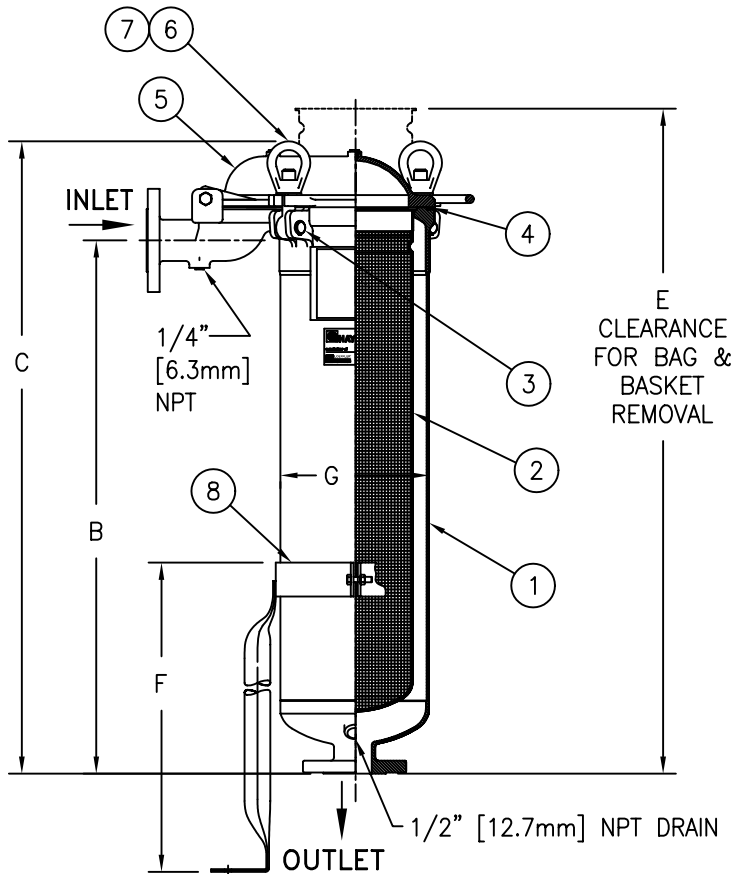


VESSEL TYPE CODE	PART NUMBER	BAG SIZE	A IN. / MM	B IN. / MM	C IN. / MM	D IN. / MM	E IN. / MM	F IN. / MM	G IN. / MM	FLOW RATE GPM (MAX)	WEIGHT LBS/KGS
TBF-0101-CS10-020A	F3AVTB0003	01	12.10 / 307	15.50 / 394	21.25 / 540	19.12 / 486	32.00 / 813	24.40 / 619	8.62 / 219	90	80/36.3
TBF-0102-CS10-020A	F3AVTB0004	02	12.10 / 307	31.00 / 787	36.75 / 934	19.12 / 486	63.00 / 1600	24.40 / 619	8.62 / 219	180	93/42.2



NO.	PART NAME	MATERIAL
1	BODY	SA-216 WCB SA-53 GR.B
2	RESTRAINER BASKET	316 STAINLESS STEEL
3	PIN	SA-193 GR B7, ZINC PL
4	O-RINGS (2)	BUNA-N
5	COVER	SA-216 WCB
6	EYE BOLT	SA-193 GR B7, ZINC PL
7	EYE NUT	SA-194 GR 2H, ZINC PL
8	LEGS	STAINLESS STEEL



NOTES:

- VESSEL DESIGNED, CONSTRUCTED & "UM" STAMPED IN ACCORDANCE WITH ASME SECTION VIII, DIV. 1 LATEST EDITION AND ADDENDA.
- INLET/OUTLET FLANGED CONNECTIONS PER ANSI B16.5.
- MAWP: 150 PSI @ 250° F
(10.3 BAR @ 121.1° C)
MDMT: -20° F @ 150 PSI
(-28.9° C @ 10.3 BAR)
- MAXIMUM OPERATING TEMP. 400° F (204.4° C) WITH VITON O-RING.
- PAINT PER HAYWARD STANDARD ES-301.

CERTIFIED FOR:
P.O. NO.:
REG. NO.:
QUOTE NO.:
TAG NO.:
FILTER BAG:

EATON		EATON FILTRATION, LLC			
		900 FAIRMOUNT AVENUE, ELIZABETH, NEW JERSEY 07207			
NAME		2" 150#RF FLANGE MODEL TBF TOPLINE BAG FILTER CARBON STEEL			
DRAWN	FM	DATE	8/28/00	CERT.	LF
DATE	8/28/00	DATE	8/28/00	REV	C
SIZE	DWG NO	F3AVTBFC			REV
A					C

ELECTRONIC FILE NAME: F3AVTBFC.DWG
REF. ECR D637 DATE 12/21/05

UNAUTHORIZED USE, MANUFACTURE OR REPRODUCTION IN WHOLE OR IN PART IS PROHIBITED. DRAWING, DESIGN AND OTHER DISCLOSURES PROPERTY OF EATON FILTRATION, LLC