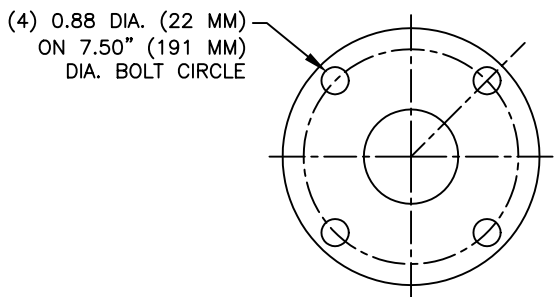


NO.	PART NAME	MATERIAL
1	VENT VALVE	GLASS-FILLED PPL
2	COVER	GLASS-FILLED PPL
3	BODY	GLASS-FILLED PPL
4	BASKET	GLASS-FILLED PPL
5	FLANGE ADAPTER	2" CL. 150 PPL
6	PLUG	GLASS-FILLED PPL
7	O-RING	VITON
8	BAG RETAINER	GLASS-FILLED PPL
9	O-RING	VITON

- NOTES:
1. PRESSURE RATING: 150 PSI @ 70° F (NON SHOCK) (10.3 BAR @ 21° C)
 2. VENT GAUGE AND DIFFERENTIAL PRESSURE GAUGE ARE OPTIONAL.
 3. INLET CONNECTION: 2" (50mm) FLANGE
OUTLET/DRAIN CONNECTION: 2" (50mm) FLANGE
 4. BAG SIZES:
BAG #1-SINGLE LENGTH (FITS 210102F00)
7" X 16" (2.0 SQ.FT.)
178 MM X 406 MM (1858 SQ.CM.)
BAG #2-DOUBLE LENGTH (FITS 210202F00)
7" X 32" (4.1 SQ.FT.)
178 MM X 813 MM (3809 SQ.CM.)
 5. FOR METAL PIPING INSTALLATION, A MINIMUM OF 20" PLASTIC PIPE IS REQUIRED ON UPSTREAM AND DOWNSTREAM OF FILTER VESSEL.



CERTIFIED FOR:
P.O. NO.:
REG. NO.:
QUOTE NO.:
TAG NO.:

PART NO.	A		B		C		D		E		F		G		H		WT. (DRY)	
	IN.	MM.	IN.	MM.	IN.	MM.	IN.	MM.	IN.	MM.	IN.	MM.	IN.	MM.	IN.	MM.	LBS.	KG.
FLT4201F	5.69	145	10	254	3.25	83	34.12	867	20	508	18.38	467	8.63	219	23.88	607	53	24
FLT4202F	5.69	145	10	254	3.25	83	50.12	1273	36	914	18.38	467	8.63	219	39.88	1013	66	30

		EATON FILTRATION, LLC 900 FAIRMOUNT AVENUE, ELIZABETH, NEW JERSEY 07207					
		NAME POLYLINE BAG FILTER FLANGE CONNECTION SIZE 2" POLYPROPYLENE					
DRAWN	FM	DATE	10/4/96	CERT.	LF	DATE	10/4/96
SIZE	DWG	SD02100F				REV	D
A	NO						

ELECTRONIC FILE NAME: SD02100F.DWG
REF. ECR D507 DATE 1/30/06

UNAUTHORIZED USE, MANUFACTURE OR REPRODUCTION IN WHOLE OR IN PART IS PROHIBITED. DRAWING, DESIGN AND OTHER DISCLOSURES PROPERTY OF EATON FILTRATION, LLC