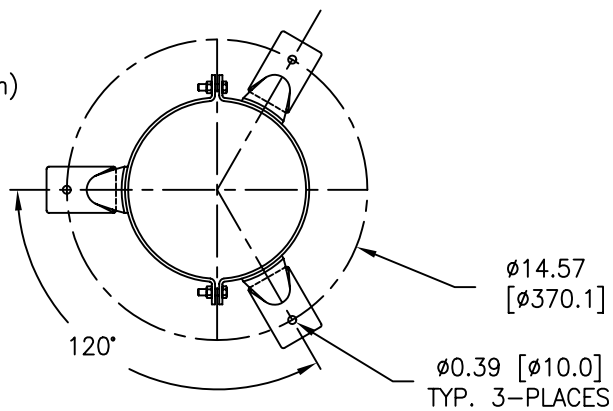
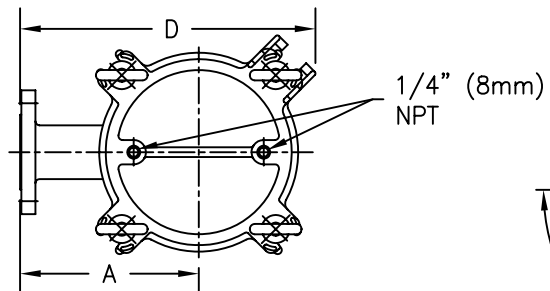
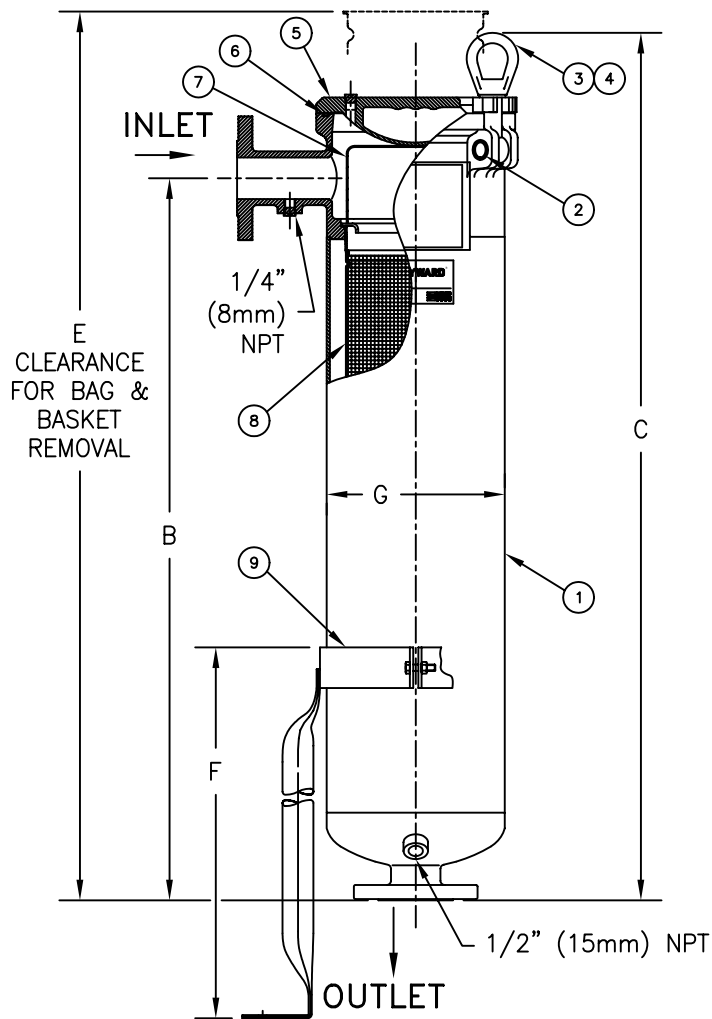


PART NUMBER	BAG SIZE	A IN. / MM	B IN. / MM	C IN. / MM	D IN. / MM	E IN. / MM	F IN. / MM	G IN. / MM	FLOW RATE GPM (MAX)	WEIGHT LBS / KGS
SBF0111SB02F	01	8.66 / 220	19.50 / 495	26.62 / 676	14.38 / 365	38.00 / 965	24.40 / 619	8.62 / 219	90	84 / 38.1
SBF0112SB02F	02	8.66 / 220	35.00 / 889	42.12 / 1070	14.38 / 365	69.00 / 1753	24.40 / 619	8.62 / 219	180	102 / 46.3



MOUNTING DETAIL

NO.	PART NAME	MATERIAL
1	BODY	SA-351 CF8M SA-312 TP 316
2	PIN	SA-193 GR B7, ZINC PL
3	EYE BOLT	SA-193 GR B7, ZINC PL
4	EYE NUT	SA-194 GR 2H, ZINC PL
5	COVER	SA-351 CF8M
6	O-RINGS	BUNA-N
7	BAG HOLD DOWN	316 STAINLESS STEEL
8	RESTRAINER BASKET	316 STAINLESS STEEL
9	LEGS	STAINLESS STEEL



NOTES:

1. VESSEL DESIGNED, CONSTRUCTED & "UM" STAMPED ACCORDANCE WITH ASME SECTION VIII, DIV. 1 LATEST EDITION AND ADDENDA.
2. INLET/OUTLET FLANGED CONNECTIONS PER ANSI B16.5.
3. MAWP: 150 PSI @ 250° F
(10.3 BAR @ 121.1° C)

MDMT: -20° F @ 150 PSI
(-28.9° C @ 10.3 BAR)
4. MAXIMUM OPERATING TEMP. 400° F (204.4° C) WITH VITON O-RING.

CERTIFIED FOR:
P.O. NO.:
REG. NO.:
QUOTE NO.:
TAG NO.:
FILTER BAG:

UNAUTHORIZED USE, MANUFACTURE OR REPRODUCTION IN WHOLE OR IN PART IS PROHIBITED. DRAWING, DESIGN AND OTHER DISCLOSURES PROPERTY OF EATON FILTRATION, LLC

EATON		EATON FILTRATION, LLC 900 FAIRMOUNT AVENUE, ELIZABETH, NEW JERSEY 07207					
		NAME SIDELINE (SBF) FILTER VESSEL 2" 150#RF FLANGED CONNECTION STAINLESS STEEL					
DRAWN	LF	DATE	7/27/99	CERT.	FM	DATE	7/27/99
SIZE	DWG NO	SBF11XS				REV	D
A							

ELECTRONIC FILE NAME: SBF11XS.DWG
REF. ECR D637 DATE 01/03/06