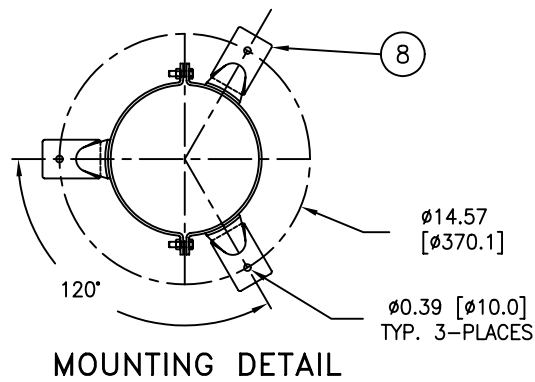
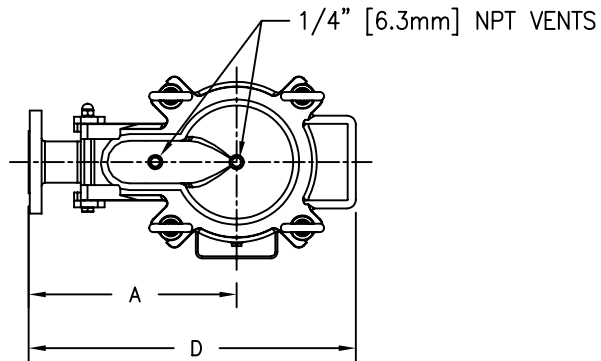
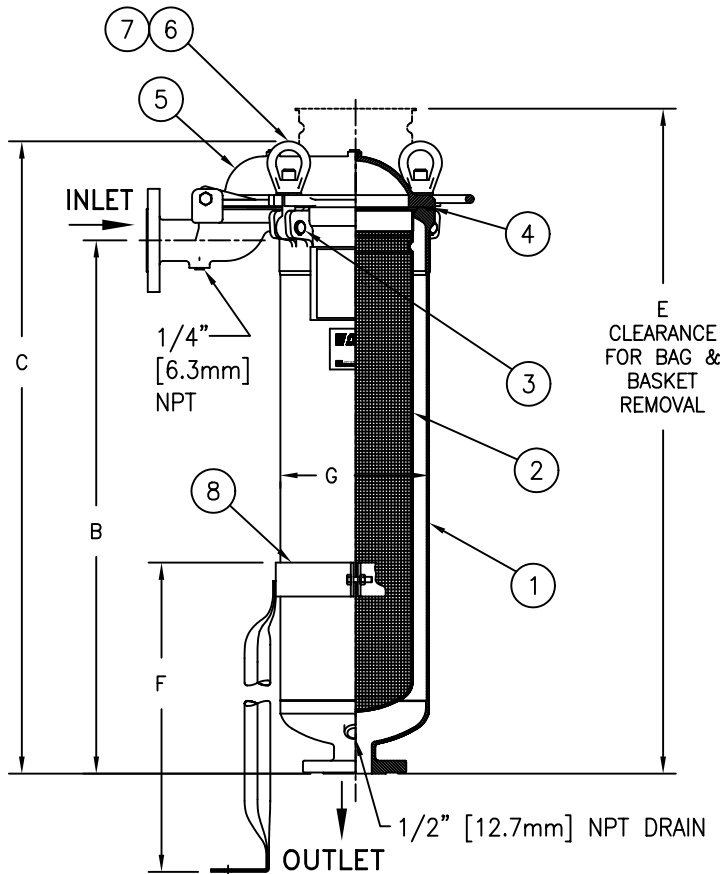


PART NUMBER	BAG SIZE	A IN. / MM	B IN. / MM	C IN. / MM	D IN. / MM	E IN. / MM	F IN. / MM	G IN. / MM	FLOW RATE GPM (MAX)	WEIGHT LBS / KGS
TBF0111SB02F304	01	12.10 / 307	15.50 / 394	21.25 / 540	19.12 / 486	32.00 / 813	24.40 / 619	8.62 / 219	90	80 / 36.3
TBF0112SB02F304	02	12.10 / 307	31.00 / 787	36.75 / 934	19.12 / 486	63.00 / 1600	24.40 / 619	8.62 / 219	180	93 / 42.2



NO.	PART NAME	MATERIAL
1	BODY	SA-351 CF8 SA-312 TP 304
2	RESTRAINER BASKET	304 STAINLESS STEEL
3	PIN	SA-193 GR B7, ZINC PL
4	O-RINGS (2)	BUNA-N
5	COVER	SA-351 CF8
6	EYE BOLT	SA-193 GR B7, ZINC PL
7	EYE NUT	SA-194 GR 2H, ZINC PL
8	LEGS	STAINLESS STEEL



**NOTES:**

1. VESSEL DESIGNED, CONSTRUCTED & "UM" STAMPED IN ACCORDANCE WITH ASME SECTION VIII, DIV. 1 LATEST EDITION & ADDENDA.
2. INLET/OUTLET FLANGED CONNECTIONS PER ANSI B16.5.
3. MAWP: 150 PSI @ 250° F MDMT: -20° F @ 150 PSI  
(10.3 BAR @ 121.1° C) (-28.9° C @ 10.3 BAR)
4. MAXIMUM OPERATING TEMP. 400° F (204.4° C) WITH VITON O-RING.

CERTIFIED FOR:  
P.O. NO.:  
SALES ORDER NO.:  
QUANTITY:  
TAG NO.:  
FILTER BAG:

<b>EATON</b>	<b>EATON FILTRATION, LLC</b> 900 FAIRMOUNT AVENUE, ELIZABETH, NEW JERSEY 07207		
	NAME TOPLINE (TBF) FILTER VESSEL 2"-150#RF FLANGED CONNECTION STAINLESS STEEL-304		

DRAWN	fjm	DATE	05/30/07	CERT.	lh	DATE	05/30/07
SIZE	DWG	TBF11XS-304				REV	A
A	NO						A

ELECTRONIC FILE NAME: TBF11XS-304.DWG  
REF. ECR E643 DATE 05/30/07

UNAUTHORIZED USE, MANUFACTURE OR REPRODUCTION IN WHOLE OR IN PART IS PROHIBITED. DRAWING, DESIGN AND OTHER DISCLOSURES PROPERTY OF EATON FILTRATION, LLC