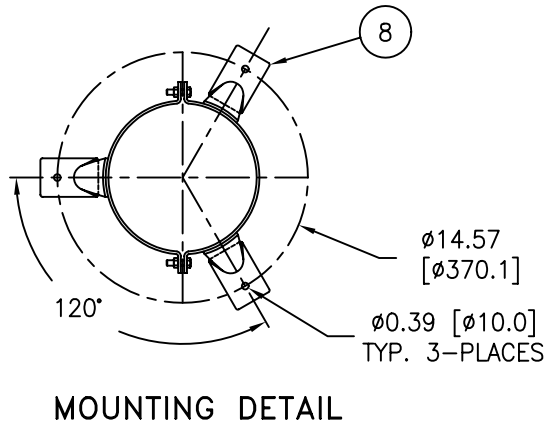
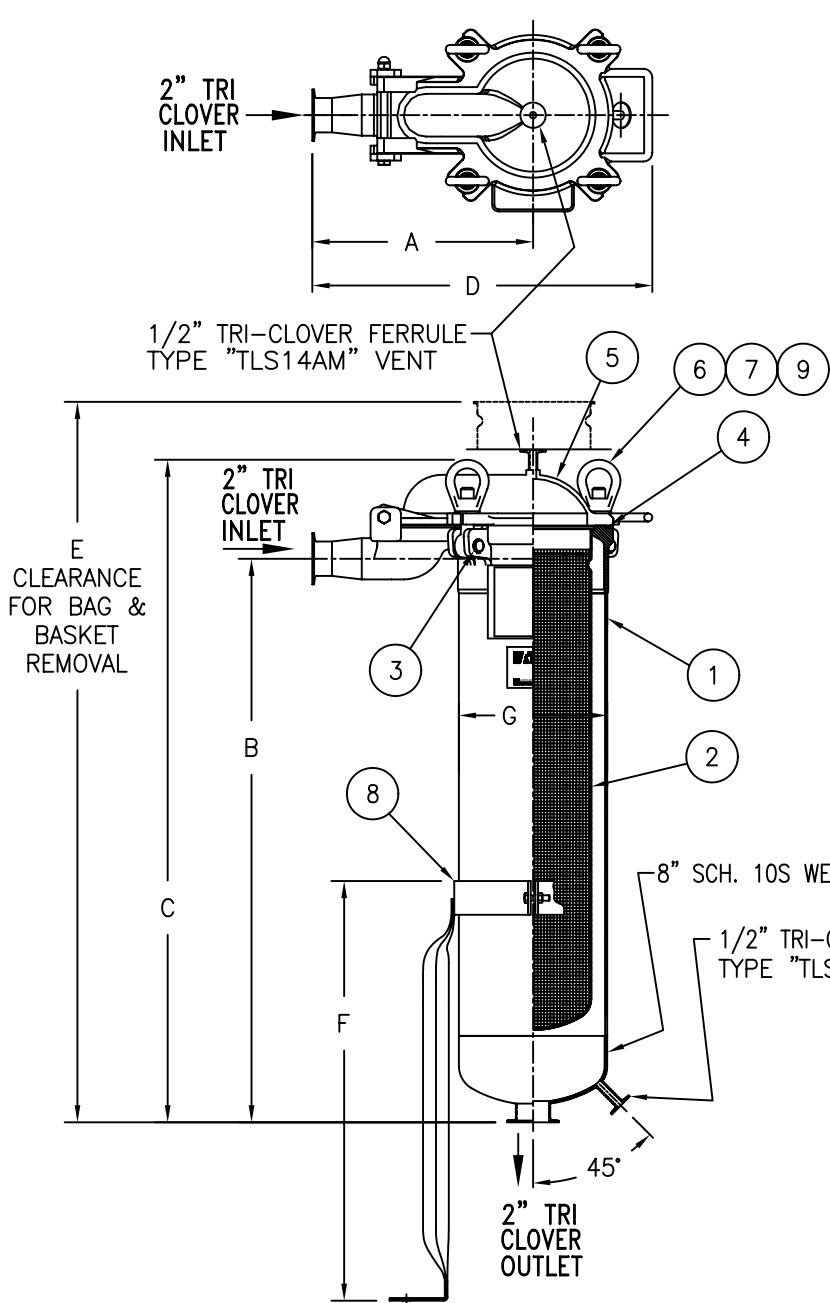


PART NUMBER	BAG SIZE	A IN. / MM	B IN. / MM	C IN. / MM	D IN. / MM	E IN. / MM	F IN. / MM	G IN. / MM	FLOW RATE GPM (MAX)	WEIGHT LBS / KGS
TBF0112SB02FTC	02	12.83 / 325	32.78 / 832	38.53 / 978	19.79 / 501	64.78 / 1645	24.40 / 619	8.62 / 219	180	93 / 42.2



NO.	PART NAME	MATERIAL
1	BODY	SA-351 CF8M SA-312 TP 316
2	RESTRAINER BASKET	316 STAINLESS STEEL
3	PIN	SA-193 GR B8
4	O-RINGS (2)	BUNA-N
5	COVER	SA-351 CF8M
6	EYE BOLT	SA-193 GR B8
7	EYE NUT	SA-194 GR 2H, ZINC PL
8	LEGS	STAINLESS STEEL
9	WASHER	STAINLESS STEEL

NOTES:

1. VESSEL DESIGNED, CONSTRUCTED, & "UM" STAMPED IN ACCORDANCE WITH ASME SECTION VIII, DIV. 1 LATEST EDITION AND ADDENDA.
2. INLET/OUTLET CONNECTIONS 2" TRI-CLOVER TYPE "L14AM" FERRULE.
3. MAWP: 150 PSI @ 250° F (10.3 BAR @ 121.1° C)
MDMT: -20° F @ 150 PSI (-28.9° C @ 10.3 BAR)
4. MAXIMUM OPERATING TEMP. 400° F (204.4° C) WITH VITON O-RING.
5. POLISH INTERNAL SURFACES TO 0.8 MICRO METER.
6. EXTERNAL SURFACES TO BE ELECTRO-POLISHED.

CERTIFIED FOR:
P.O. NO.:
REG. NO.:
QUOTE NO.:
TAG NO.:
FILTER BAG:
VESSEL CODE: TBF-0102-AB10-020R-M32B0

EATON		EATON FILTRATION, LLC			
		900 FAIRMOUNT AVENUE, ELIZABETH, NEW JERSEY 07207			
NAME		TOPLINE (TBF) FILTER VESSEL 2" TRI-CLOVER FERRULE CONN. STAINLESS STEEL			
DRAWN	FJM	DATE	02/27/04	CERT.	LH
DATE	02/27/04				
SIZE	DWG NO	TBF11XSTC			REV
A					D

ELECTRONIC FILE NAME: TBF11XSTC.DWG
REF. ECR E431 DATE 01/25/07

UNAUTHORIZED USE, MANUFACTURE OR REPRODUCTION IN WHOLE OR IN PART IS PROHIBITED. DRAWING, DESIGN AND OTHER DISCLOSURES PROPERTY OF EATON FILTRATION, LLC